



NORLAND CC6000



3D measurement of PC and APC connectors

This compact interferometer attaches to a PC or laptop through a standard USB port and uses the CC6000 software to control the interferometer and measure the connectors. No custom boards or complicated configurations are required. Simply install the software, plug in the CC6000 and run. The user friendly software allows anyone with minimal experience to accurately measure the 3D end face geometry of a fibre optic connector. The CC6000 is designed for both the factory or the field to provide the quality information needed to assure the long term performance of fibre optic connectors.

No mechanical adjustments

The Norland CC6000 is the next generation of interferometric technology for fibre testing. This new system uses proprietary software that enables it to evaluate the key parameters without the need for costly phase-shifting devices. The CC6000 uses Norland's unique Tilted Phase Analysis in which the connector is held at a slight angle to produce circular fringes across the fibre. This provides all the information required to measure the connector. After a simple calibration to measure the tilt, the advanced algorithms enable the calculation of the spherical radius of curvature, spherical fibre height and apex offset of the connector. An advantage of the Tilted Phase Analysis is that any small angle is suitable, so no mechanical adjustments are ever required.

Specifications

Size	223mm wide x 353mm deep x 50mm high
Power	12 volt adaptor
Magnification	10 x objective
Light Source	Visible red LED at 660nm
Lateral Resolution	1 micron
Field of View	355µm x 406µm

Order Code Description

Connector / Ferrule Mounts

854119	1.25 mm PC connector
854248	SC/APC connector
854123	FC/APC connector
854124	E2000/APC connector
854125	LC/MU/F3000/APC connector
854120	2.0 mm PC connector
854122	0.0625" PC ferrule

Offset Calibration Tools / Reference Tool

Order Code	Description
854222	1.25 mm PC
854048	2.5 mm APC mounts
854129	1.25 mm APC mounts
854242	2.0 mm
854261	0.0625"



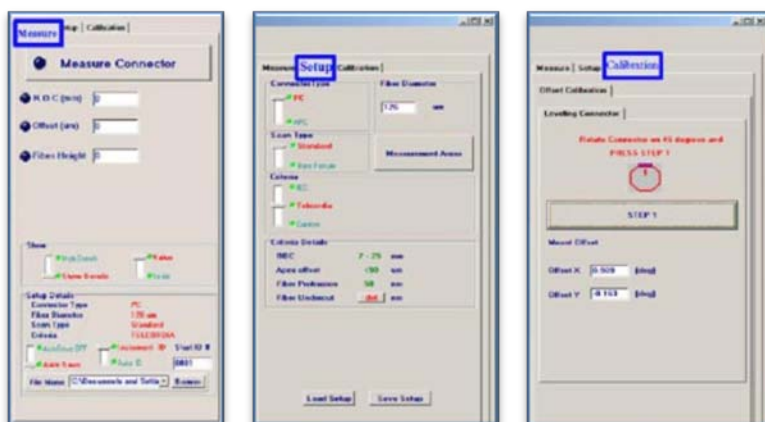


NORLAND CC6000



Easy-to-use interface

The CC6000's user interface is ultra simple, with every option visible under intuitive Menu Tabs. Just a click of the mouse calls up the Measure, Setup, Calibration, or History window. Everything is preset to allow pass/fail measurements of PC and APC connectors using IEC, Telcordia, or your own custom standards. Precision mounts are available for all types of connectors and ferrules. Data can be saved to any directory on a network and automatically be imported to an Excel spreadsheet.



The Three Menu Tabs (Menu, Setup & Calibration) provide all the simple, intuitive choices for controlling the CC6000

Minimum Computer Requirements

Pentium IV 1.5GHz computer with Windows 2000 or Windows XP

USB 1.1 or higher

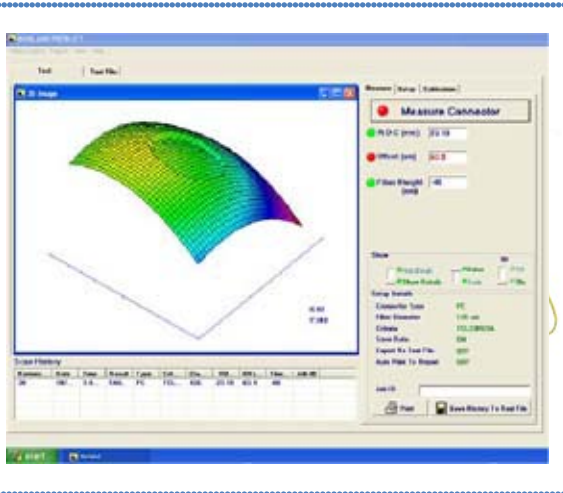
128MB RAM



TESTING EQUIPMENT



NORLAND CC6000



	Range	Reproducibility	Repeatability
Radius of Curvature (mm)	3-50	2%	1%
Apex Offset μm	0-100	4	2
Spherical Fibre Height (nm)	± 160	10	5

Precision offset measurements

The CC6000 is extremely robust and designed for accurate measurements in production, laboratory or field environments. Precision offset measurements are guaranteed due to the patented locking v-groove mount which holds the connector in an exact, repeatable position during calibration and measurement. The system has been optimised to provide unsurpassed stability so that a single offset calibration on the same mount will last for weeks. Mounts are available for 2.5mm, 2.0mm and 1.25mm diameter connector ferrules.

3D end face image

The latest upgrade of the CC6000 is the introduction of the three dimensional image of the fibre and ferrule end face. Using the computer keyboard arrow keys, the image can be rotated to suit the users view. This becomes an ideal teaching aid to demonstrate fibre undercut and protrusion and gives the user a clear understanding of the fibre and ferrule end face.

